

Key Features

Real estate complex for industrial and commercial use located in the municipality of Gorizia, in an area characterized by roads of primary importance and the presence of industrial activities.

- Gross Land site area: 32,123 sqm
- Covered surface: 8,488 sqm
- Wide external area: 23,634 sqm
- Max height: 6,15 mt

In case of demolition and new development:

- Covered buildable surface: 16,000 sqm



Surdace

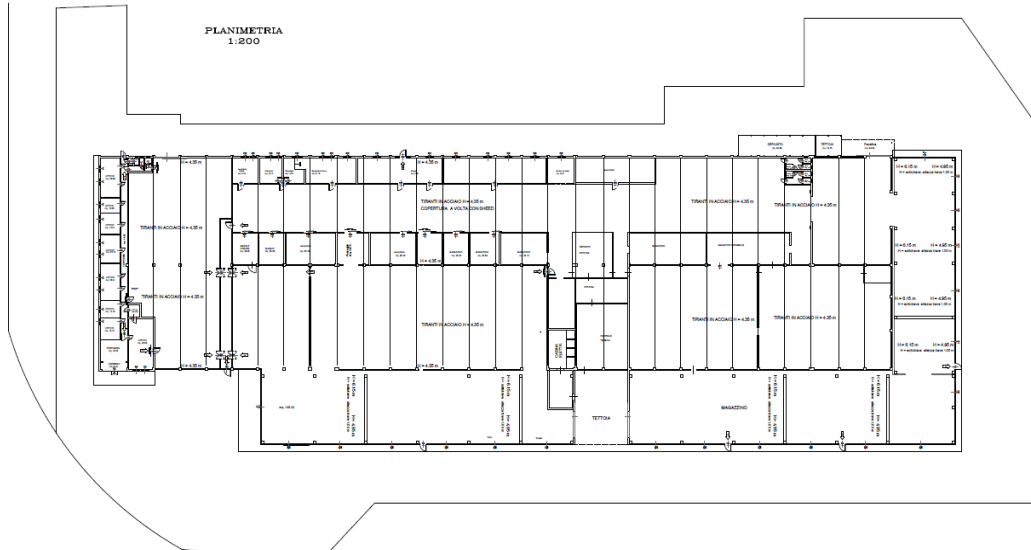
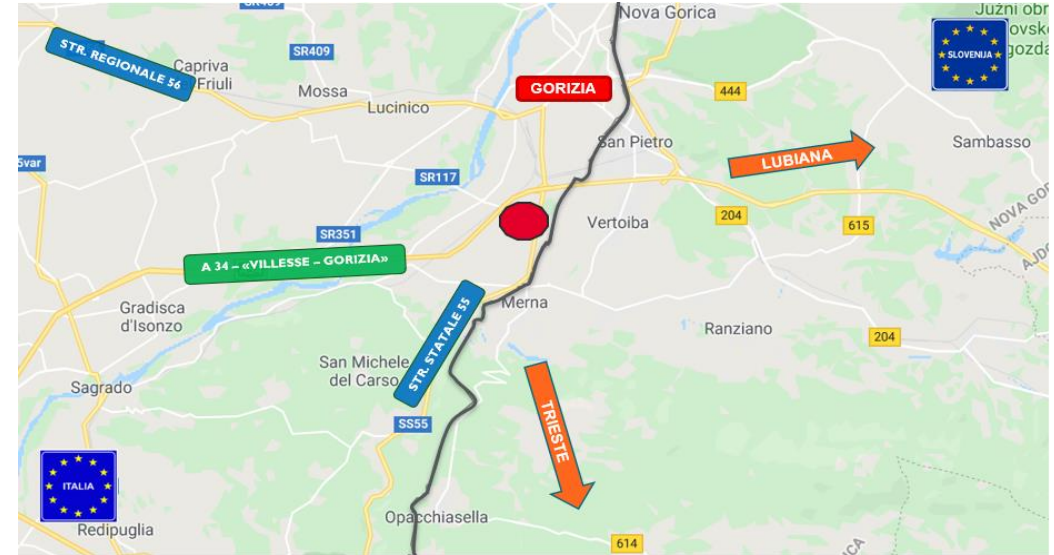
Gross Land site area	32,123 sqm
Covered surface	8,488 sqm
External area	23,634 sqm

For more information:

Alessandro Gazzari
02 63799 1
alessandro.gazzari@cushwake.com

Alessandro Mancini
02 63799 1
alessandro.mancini@cushwake.com

Via Turati 16/18
20121 Milano
cushmanwakefield.com



Location

The logistics warehouse is located in the industrial area of the municipality of Gorizia (GO). The building is located near the State Road 55, 1 km away from the motorway exit "Gorizia" of the motorway A34 "Villesse - Gorizia", near the Regional Road 56 and less than 2 km from the Slovenian border.

Distance

Highway 55	0.1 km
Motorway A34 – exit «Gorizia»	1 km
Slovenian border	1.5 km
Gorizia	2.5 km
Regional road 56	3.5 km
Airport «Monfalcone»	30 km
Trieste	40 km

DISCLAIMER

Le informazioni contenute nel presente documento hanno finalità esclusivamente illustrative per quanto riguarda le caratteristiche generali del progetto. Il presente documento e le informazioni in esso contenute non rappresentano un'offerta o un contratto, né vanno interpretate come tali.
In caso di discrepanze tra le informazioni contenute nel presente documento e le condizioni di vendita o di locazione, prevalgono le seconde.